

Installation Guide for *The Launcher*

System Requirements

Pentium III 500 MHz or faster

256 MB RAM

Windows 2000 SP4, Windows XP SP2

Alt-Tab Thingy (included in installer and available at

<http://www.nymtec.com/?q=download#att> - only required to use the “View Running Programs” feature).

Installation Procedure

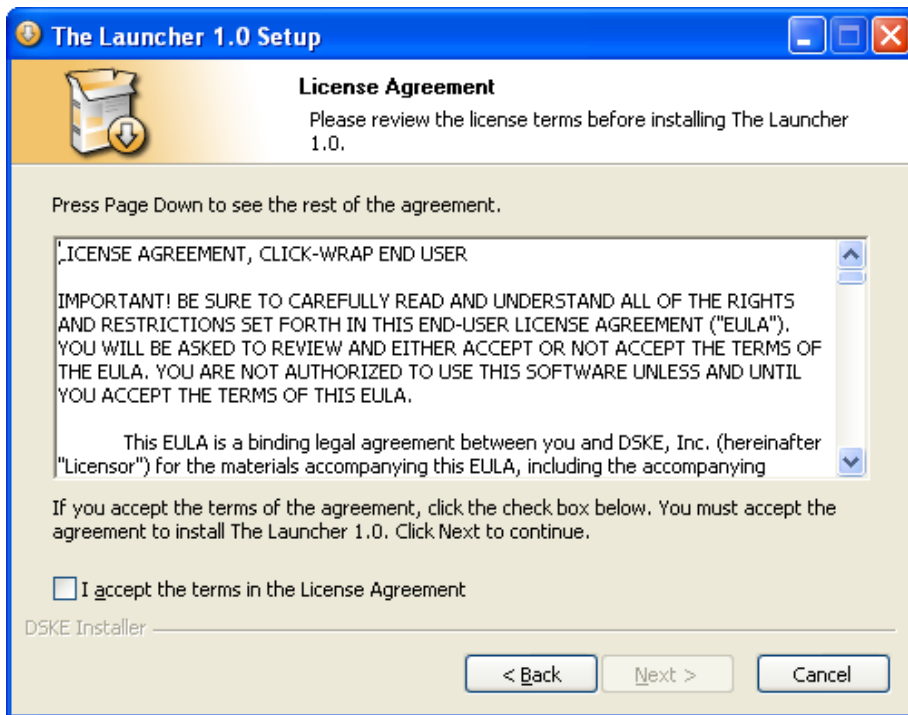
- 1) Locate the installer file and double click on the icon to start the installer.
- 2) Choose your installer language (English or Spanish).



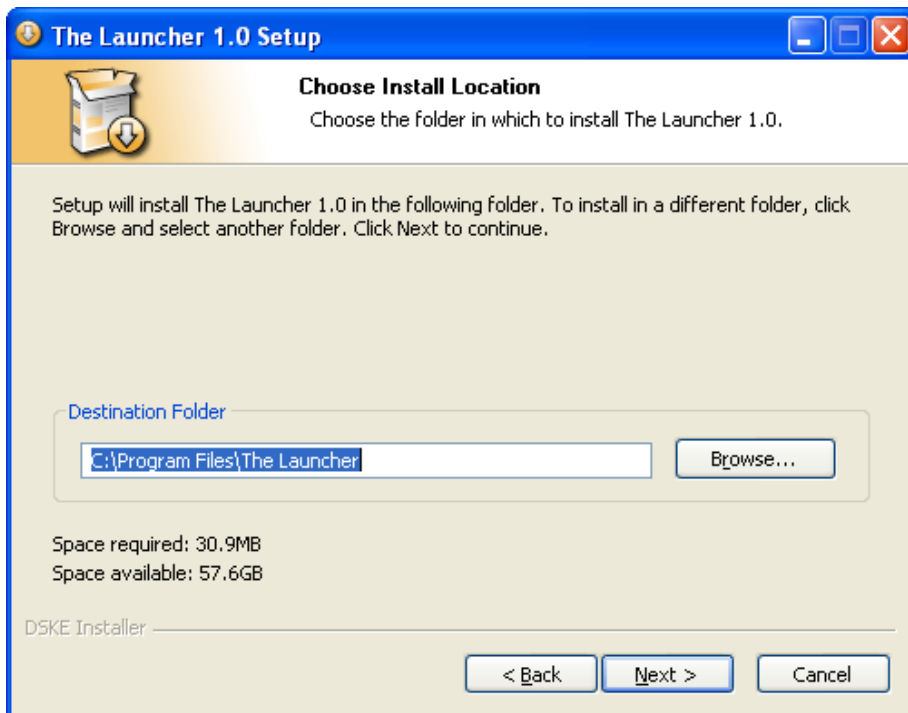
- 3) Click Next to continue.



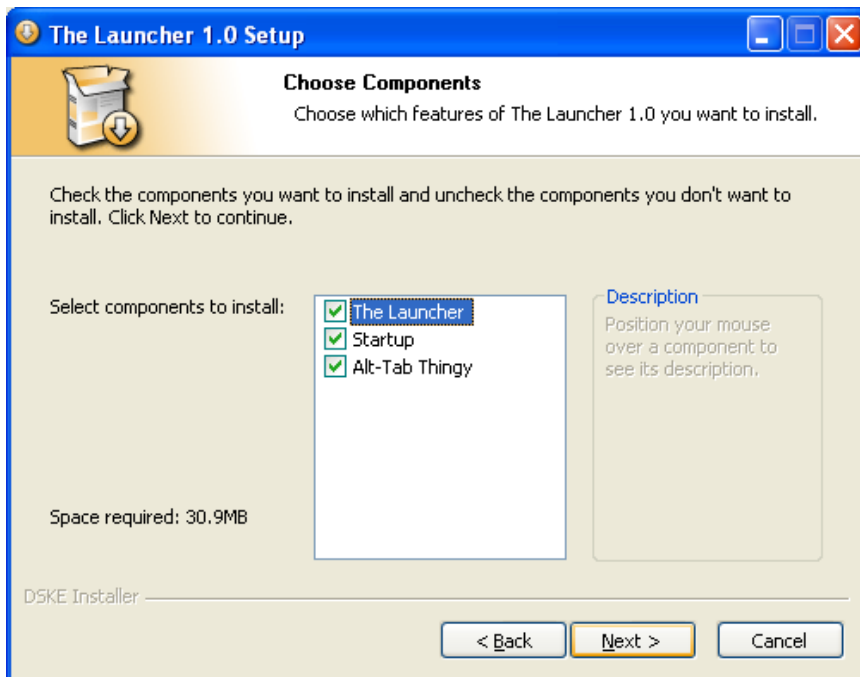
- 4) Review the license agreement and click on the checkbox for “I accept the terms in the License Agreement” if you agree to the terms of the license. Click on Next to continue.



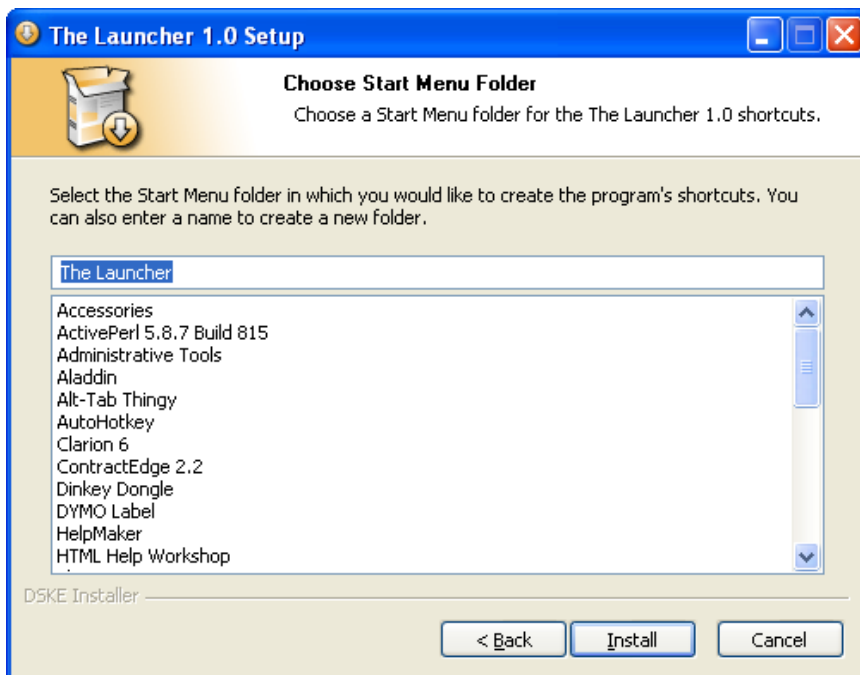
- 5) Choose the location to install *The Launcher* and click Next to continue.



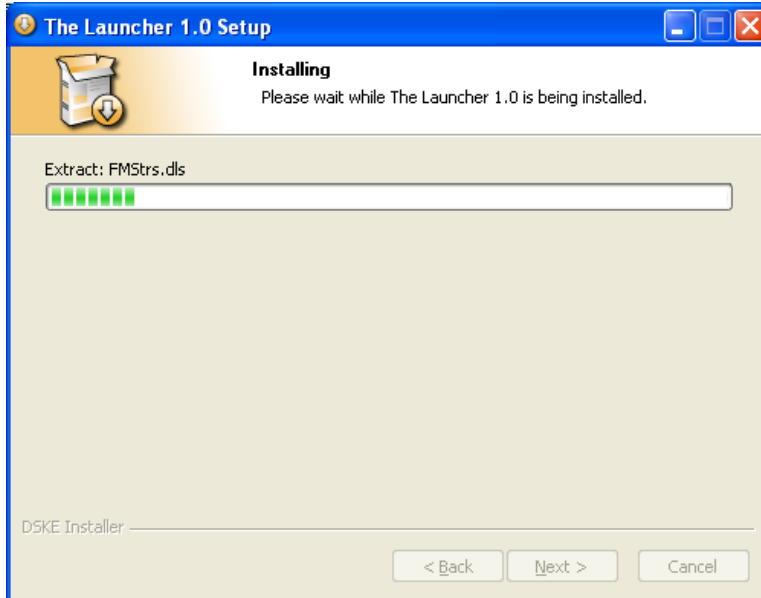
6) Select the components that you want to install. “*The Launcher*” is the main file and is required. “Startup” will start *The Launcher* each time that Windows loads. “Alt-Tab Thingy” is required to utilize the “View Running Programs” feature in *The Launcher*.



7) Choose the Start Menu folder name for *The Launcher*. The default folder name is “*The Launcher*”. Click Install after making your choice



8) You will see a progress bar while the installation is being performed.



9) If you chose to install "Alt-Tab Thingy" the installer will launch during the installation process. Follow the on screen instructions to install and configure Alt-Tab Thingy on your computer.

10) Once the install process has been completed, you can check the box to run *The Launcher* and *The Launcher* will start upon clicking finish.



Congratulations, the install process has been completed and you are ready to begin using *The Launcher*.